

# Improving Project Outcomes with Air Force's New CMIS Application

Moderator: Nicholas Johnson, Kahua

Speakers:

- Megan Robare, Project Management SME, AFCEC
- Bert Aultman, PMIS Lead, Procon Consulting
- Kathy Kearney, Professional Services Consultant, Kahua

May 14, 2024, 1:30 p.m.



 conferences i/o



or browse to  
[jetc.cnf.io](https://jetc.cnf.io)

This is an interactive session.  
To participate, use your mobile device:  
[jetc.cnf.io](https://jetc.cnf.io)  
Or scan the QR Code

- Find the session.
- The presenter will unlock the poll(s) during the presentation.
- Please complete a brief Evaluation Survey at the end of the session.

MAY 14-16, 2024  
ORLANDO, FL

OPERATION:  
COLLABORATION

SAME SAMEJETC.ORG

# HOUSEKEEPING ITEMS

Take Note of Exits

Silence Your Mobile Devices

Presentations and Audio Recordings will be available in the Attendee Service Center until August 30, 2024

Download your PDH record in the Attendee Service Center before August 30, 2024



# Thank You to our Education Session Sponsors







# MODERATOR



**Nicholas Johnson**  
Kahua  
Chief Evangelist

## Fun Facts

- Love college sports! Go Dawgs!
- Visited 40+ countries.
- Grandfather to 4 J
- Hopes to someday learn to play the piano.

MAY 14-16, 2024  
ORLANDO, FL

OPERATION:  
COLLABORATION

SAME SAMEJETC.ORG



# SPEAKER



Megan Robare  
AFCEC CFTP  
Project Management SME

## Fun Facts

- Kids, Soccer, Kids, Soccer...chaos



MAY 14-16, 2024  
ORLANDO, FL

OPERATION:  
COLLABORATION

SAME SAMEJETC.ORG





# SPEAKER



**Bert Aultman**  
Procon Consulting  
PMIS Business Lead

## Fun Facts

- Live on the Chesapeake Bay
- Got married on the cliffs in Jamaica
- Ramblin' Wreck (Go Jackets!)
- I left DC in the pandemic and now I own binoculars and books about birds and native plants.

MAY 14-16, 2024  
ORLANDO, FL

OPERATION:  
COLLABORATION

SAME SAMEJETC.ORG



# SPEAKER



## Kathy Kearney

Kahua

Professional Services Consultant

### Fun Facts

- Boston Bruins
- Newport, RI
- I am the aunt of an Olympic Gold Medalist! (National Special Olympics 2014)
- Reading, exercising, cooking & volunteering

MAY 14-16, 2024  
ORLANDO, FL

OPERATION:  
COLLABORATION

SAME SAMEJETC.ORG



*Live Content Slide*

**Poll: How many attendees are aware of CMIS/PMIS technologies and their value to planning, design, construction, and facility operations?**

# PROJECT BACKGROUND



20  
24

JOINT ENGINEER  
TRAINING CONFERENCE  
& EXPO

[SAMEJETC.ORG](http://SAMEJETC.ORG)



[@PSAMENATIONAL](https://www.facebook.com/PSAMENATIONAL)



[@PSAME\\_NATIONAL](https://twitter.com/PSAME_NATIONAL) | [#SAMEJETC24](https://twitter.com/SAMEJETC24)



["SOCIETY OF AMERICAN MILITARY ENGINEERS"](https://www.linkedin.com/company/society-of-american-military-engineers)

# What is a CMIS (PMIS)?

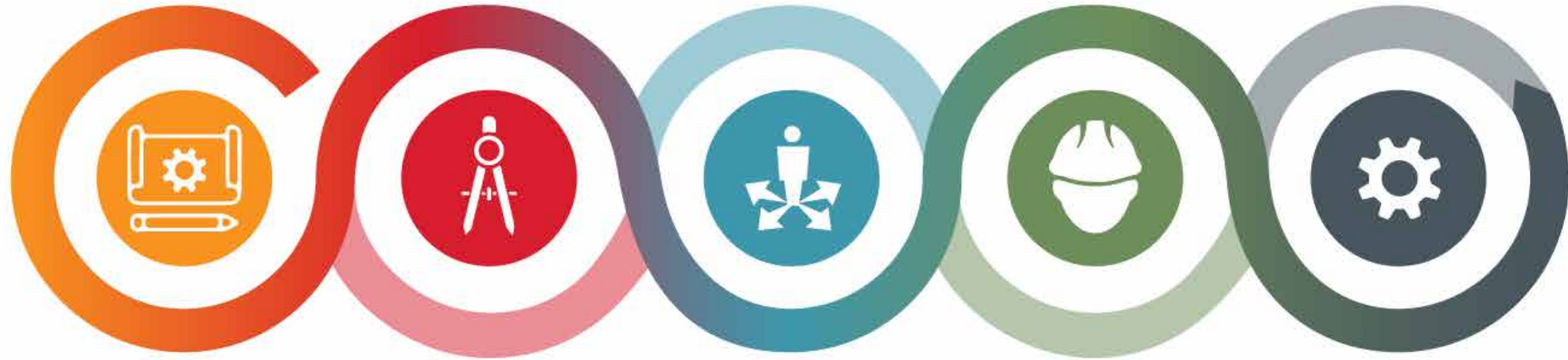
“Construction Management Information System”

An application (or collection of integrated applications) used to systematically gather, manage, and collaborate on the processes and documentation used in the design, construction, and operations of facilities.





# Capabilities across the Capital Program Lifecycle



## PLANNING

- Capital Planning
- Sources of Funds
- Cashflow Forecasting
- Funding
- Risk Management
- Vendor Management
- Portfolio Management
- Milestones & Schedule

## DESIGN

- Design Management & Control
- BIM/CAD
- Mark-Up & Approvals
- Revision Management
- Drawings & Models
- Media (Photo & Video)
- Design Reviews

## PROCUREMENT

- Bid Management
- Contract Management
- Correspondence
- File Manager
- Budget Management
- Funding Management
- Schedule of Values

## CONSTRUCTION

- Cost Management
- Construction Administration
- Construction Project Tracking
- Budgets & Commitments
- Contracts & Change Orders
- Billings & Pay Requests
- Submittals
- Daily Reports
- Properties & Locations
- RFIs
- Document Control

## OPERATIONS

- Asset Handover
- Punchlist
- Inspections
- Closeout Checklist
- Document Handover
- Asset Management



2024

JOINT ENGINEER  
TRAINING CONFERENCE  
& EXPO

SAMEJETC.ORG



@SAMENATIONAL



@SAME\_NATIONAL



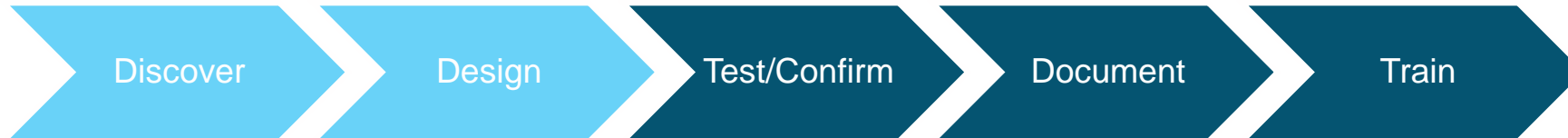
#SAMEJETC24



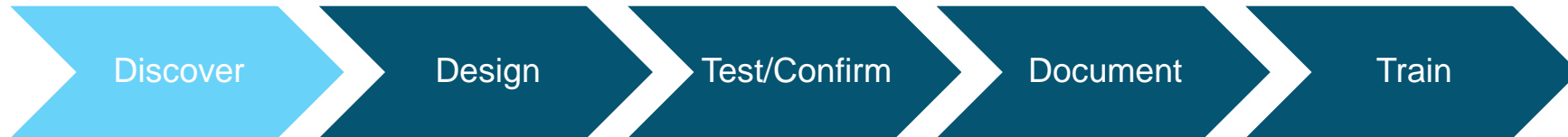
"SOCIETY OF AMERICAN MILITARY ENGINEERS"

# Current Status - Where we are right now

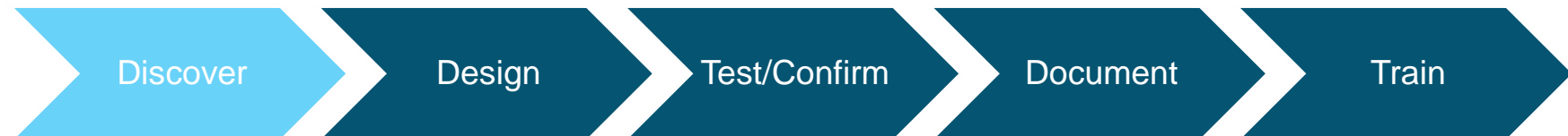
## Construction Documents and Processes



## Programming, Budget, and Contract Management



## Other Applications, Continuous Improvement, etc.



# ROUNDTABLE DISCUSSION



2024

JOINT ENGINEER  
TRAINING CONFERENCE  
& EXPO

[SAMEJETC.ORG](http://SAMEJETC.ORG)



[@PSAMENATIONAL](https://www.facebook.com/PSAMENATIONAL)



[@PSAME\\_NATIONAL](https://twitter.com/PSAME_NATIONAL) | [#SAMEJETC24](https://twitter.com/SAMEJETC24)



["SOCIETY OF AMERICAN MILITARY ENGINEERS"](https://www.linkedin.com/company/society-of-american-military-engineers)



# Discussion Topic #1

What led the Air Force to procuring a CMIS and choosing Kahua?

# Air Force's Goals for CMIS

- Integration and Interoperability: Manually integrate the CMIS with existing systems and ensure interoperability.
- Data Accuracy and Quality: Ensure accurate and reliable data within the CMIS effectively supporting all phases of the project life cycle.
- User Adoption and Training: Maximize user adoption of the CMIS.
- Risk Management and Security: Secure information in accordance with Federal security requirements and secure information with role-base permissions
- Performance Metrics and KPIs: Measure the effectiveness AF construction management practices and associated construction.
- Scalability: Ensure the CMIS can accommodate future growth within AF Civil Engineering project execution.

# Discussion Topic #2

What are you most excited about for the Air Force when the Kahua CMIS is fully implemented?



20  
24

JOINT ENGINEER  
TRAINING CONFERENCE  
& EXPO

[SAMEJETC.ORG](http://SAMEJETC.ORG)



[@SAMENATIONAL](https://www.facebook.com/SAMENATIONAL)



[@SAME\\_NATIONAL](https://twitter.com/SAME_NATIONAL) | [#SAMEJETC24](https://twitter.com/SAMEJETC24)



["SOCIETY OF AMERICAN MILITARY ENGINEERS"](https://www.linkedin.com/company/society-of-american-military-engineers)



# Discussion Topic #3

How do you foresee the CMIS  
improving Project Risk Management for  
the Air Force?



20  
24

JOINT ENGINEER  
TRAINING CONFERENCE  
& EXPO

[SAMEJETC.ORG](http://SAMEJETC.ORG)



[@SAMENATIONAL](https://www.facebook.com/SAMENATIONAL)



[@SAME\\_NATIONAL](https://twitter.com/SAME_NATIONAL) | [#SAMEJETC24](https://twitter.com/SAMEJETC24)



["SOCIETY OF AMERICAN MILITARY ENGINEERS"](http://www.societyofamericanmilitaryengineers.org)

# Discussion Topic #4

What feature, function or focus do you think will be most important for the success of the CMIS at Air Force?



20  
24

JOINT ENGINEER  
TRAINING CONFERENCE  
& EXPO

[SAMEJETC.ORG](http://SAMEJETC.ORG)



[@SAMENATIONAL](#)



[@SAME\\_NATIONAL](#) | [#SAMEJETC24](#)



"SOCIETY OF AMERICAN MILITARY ENGINEERS"

# Discussion Topic #5

What critical lesson have you learned during this process that you would share with anyone undertaking a similar technology implementation?



20  
24

JOINT ENGINEER  
TRAINING CONFERENCE  
& EXPO

[SAMEJETC.ORG](http://SAMEJETC.ORG)



[@SAMENATIONAL](#)



[@SAME\\_NATIONAL](#) | [#SAMEJETC24](#)



"SOCIETY OF AMERICAN MILITARY ENGINEERS"



# THANK YOU

Please take a few minutes to complete a short survey about this session. Your feedback will help us improve future programming for JETC.

 **conferences i/o**



or browse to  
[jetc.cnf.io](https://jetc.cnf.io)

# Q&A

- Megan Robare,  
[megan.robare.1@us.af.mil](mailto:megan.robare.1@us.af.mil)
- Bert Aultman,  
[baultman@proconconsulting.com](mailto:baultman@proconconsulting.com)
- Kathy Kearney,  
[kkearney@kahua.com](mailto:kkearney@kahua.com)